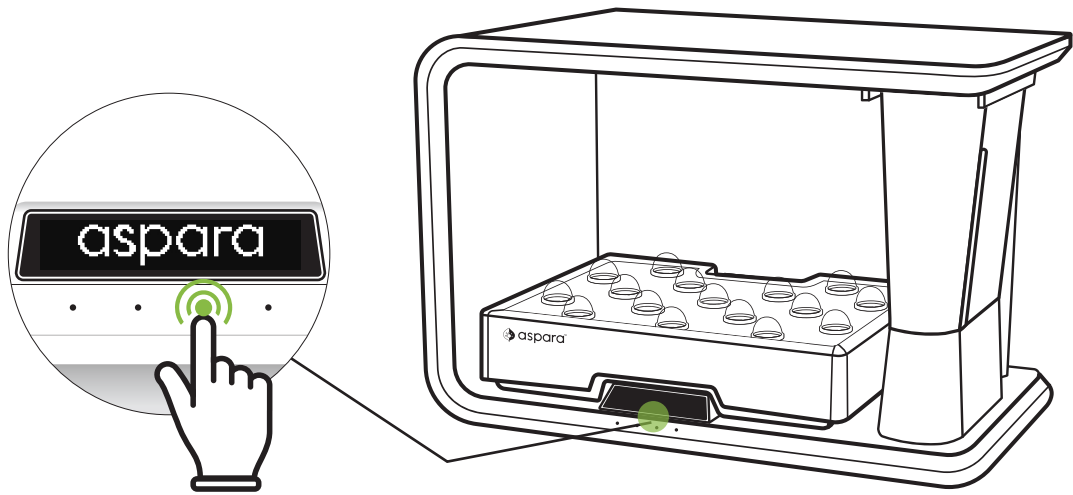


Quick set up guide



Press any button to begin

Select a mode that suits you

Switching between online/offline mode is only available after a planting cycle is finished.

Online Mode

Offline Mode

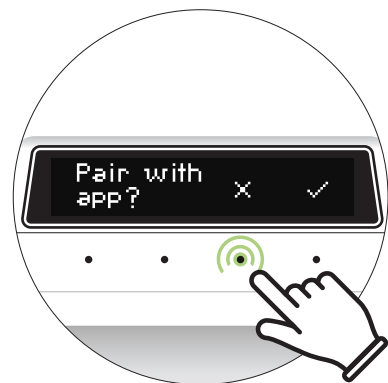
Full function with asparaTM Mobile App

Please follow the process
on next page.



asparaTM

Easy & straight forward



Press button X to start setting up

The display will then guide you
through the rest of the process

Track growth condition | Remote control | Support & sharing

1. Download the App.

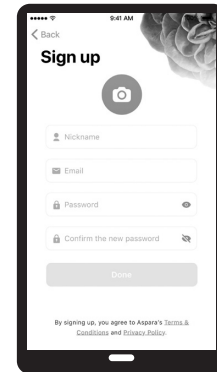
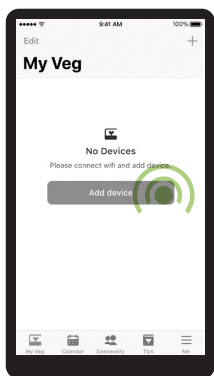
Requires iOS 10.0 or later. Compatible with iPhone and iPad; Requires Android lollipop or later.



aspara™

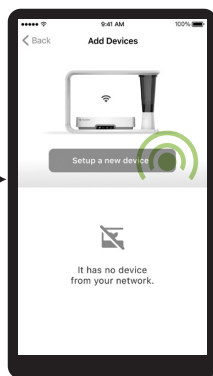


Scan this QR code
to download

**2. Launch the App and sign up.****3.1 Connect your mobile to aspara™**

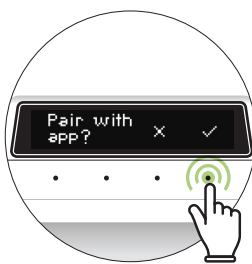
Tap

Add Device

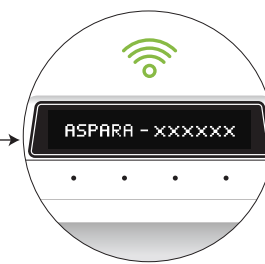


Tap

Setup a new device



Press button ✓ to pair.

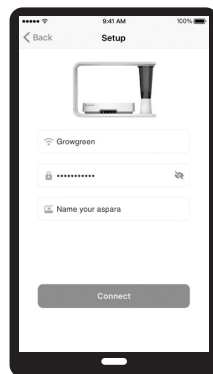


The display will then show a network name starting with "ASPARA" and followed by 6 characters.

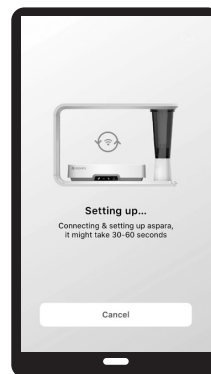
Wi-Fi setting

**3.2 Connect aspara™ to internet**

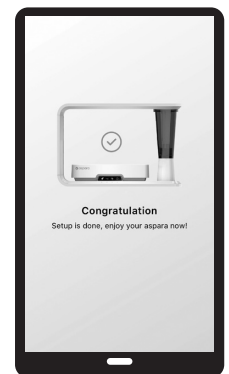
Re-launching the App will automatically bring you to this page.
Choose a network for connection



Enter the Wifi password
and name your aspara



Almost there...



Congratulation!
Set up is done.

If you cannot see this page, try:

1. Re-start the App.
2. Disable Auto Network Switch.
3. Turn on network or GPS in location setting.